

[DR TYPE]

面實裝 POWER CHOKE CORES 基座型

Nippon. Base Type

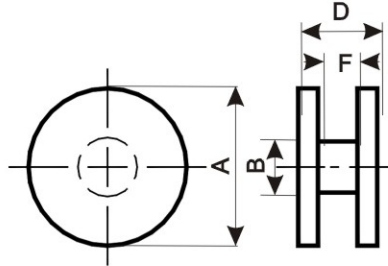


Fig. 1

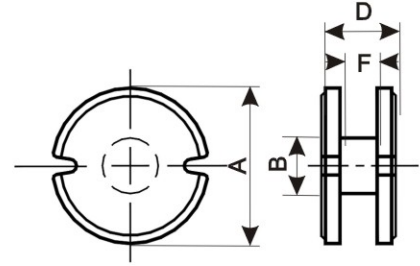


Fig. 2

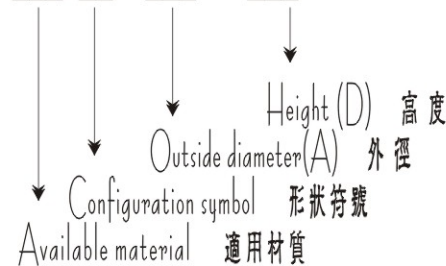
FEATURES 特長

低電感，耐大電流，體積小，設計容易，有特殊金屬電極處理，或基座型處理之表面粘著開磁路型之磁芯。

Open magnetic structure with special metallic electrode treatment or base type power choke cores provide low inductance, small size and easy design.

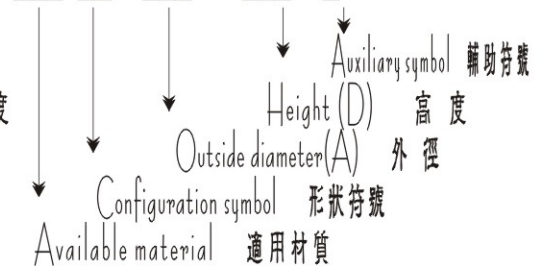
PRODUCT IDENTIFICATION

DL5 DR 4.0 × 2.0



產品識別碼

DL5 DR 4.0 × 2.0 R



DIMENSION 尺寸

UNIT:m/m

Core Order Code	A	B	D	F	Fig
DR 4.0x2.0	4.0±0.1	1.6±0.1	2.0±0.1	1.2±0.10	1
DR 5.3x2.8	5.3±0.15	2.6±0.1	2.8±0.1	1.5±0.15	1
DR 5.3x3.6	5.3±0.15	2.7±0.1	3.6±0.15	2.4±0.15	1
DR 10 x5.2	10 ±0.15	5.2±0.15	5.2±0.2	3.0±0.15	1
DR 10 x7.0	10 ±0.15	6.2±0.15	7.0±0.2	4.9±0.15	1
DR 4.2x2.0R	4.2±0.10	1.50±0.10	2.0±0.1	1.0±0.10	2
DR 6.8x2.7R	6.8±0.15	3.0±0.15	2.7±0.15	1.4±0.15	2
DR 6.8x4.0R	6.8±0.15	3.0±0.15	4.0±0.2	2.4±0.15	2

USEAGE 用途

傳呼機
行動電話
各種設備之携帶末端裝置
B. B Call;
Cellular telephone;
Personal Digital Assistant.

[DR TYPE]

面實裝 POWER CHOKE CORES 基座型

Nippon. Base Type

STANDARD SPECIFICATIONS OF DR (日規) POWER CHOKE CORES

面實裝基座型, 電感值, 直流抵抗, 定格電流規格表

Tolerance of Inductance:
電感值公差

DR 6.8×2.7 R:
1.0~100μH±20%

DR 6.8×4.0 R:
120~470μH±20%

Inductance 電感 L(μH)	DCR(Ω)Max.直流抵抗					Rated D.C.Current(A)定格電流				
	DR 4.0×2.0	DR 5.3×2.8	DR 5.3×3.6	DR 10×5.2	DR 10×7.2	DR 4.0×2.0	DR 5.3×2.8	DR 5.3×3.6	DR 10×5.2	DR 10×7.2
10	0.16	0.077	0.055	0.028		1.23	1.20	2.75mA	3.00	
22	0.39	0.18	0.13	0.06		0.80	0.80	1.79mA	2.10	
47	0.77	0.35	0.23	0.13		0.53	0.56	1.23mA	1.35	
100	1.63	0.70	0.55	0.26		0.37	0.37	0.87mA	0.96	
220	3.88	1.63	1.05	0.53		0.26	0.26	0.56mA	0.66	
470			2.36	1.25				0.34mA	0.45	
1000										

Inductance 電感 L(μH)	DCR(Ω)Max.直流抵抗			Rated D.C.Current(A)定格電流		
	DR 4.0×2.0R	DR 6.8×2.7R	DR 6.8×4.0R	DR 4.0×2.0R	DR 6.8×2.7R	DR 6.8×4.0R
1.0		0.018	0.023		3.00	2.88
1.5		0.023	0.028		2.62	2.56
2.2		0.029	0.032		2.27	2.36
3.3		0.039	0.038		1.98	2.16
4.7		0.050	0.049		1.75	1.88
6.8		0.065	0.06		1.47	1.68
10		0.086	0.07		1.28	1.56
12		0.111	0.08		1.09	1.44
15		0.143	0.09		0.98	1.36
18		0.169	0.10		0.87	1.28
22		0.202	0.12		0.80	1.17
27		0.260	0.14		0.70	1.07
33		0.312	0.16		0.63	1.00
39		0.364	0.19		0.58	0.91
47		0.442	0.22		0.53	0.84
56		0.520	0.29		0.48	0.72
68		0.650	0.34		0.42	0.66
82		0.780	0.46		0.37	0.58
100		1.027	0.55		0.33	0.51
120			0.67			0.42
150			0.90			0.37
180			1.05			0.35
220			1.35			0.29
270			1.55			0.28
330			2.05			0.23
390			2.30			0.21
470			2.60			0.19

- ▶ This indicates the value of current when the inductance is 10% lower than its initial value at D.C. Superposition or the value of D.C. Current when temperature rise $\Delta t=40^{\circ}\text{C}$ whichever is lower.
- ▶ For any DR(日規) core requirement not listed in the catalog, please feel free to contact with us for more information.

[DR TYPE] 面實裝 POWER CHOKE CORES 基座型

INDUCTANCE VS. CURRENT CURVE

Inductance Range: (1.0 μ H~1000 μ H)

TYPICAL ELECTRICAL CHARACTERISTICS CURVE:

DR 4.0X2.0 ~ DR 6.8X4.0 R

TEST INSTRUMENT ZENTECH 101 & 301A

INDUCTANCE VS. CURRENT (REFERENCE)

電感值 - 電流(參考值)

